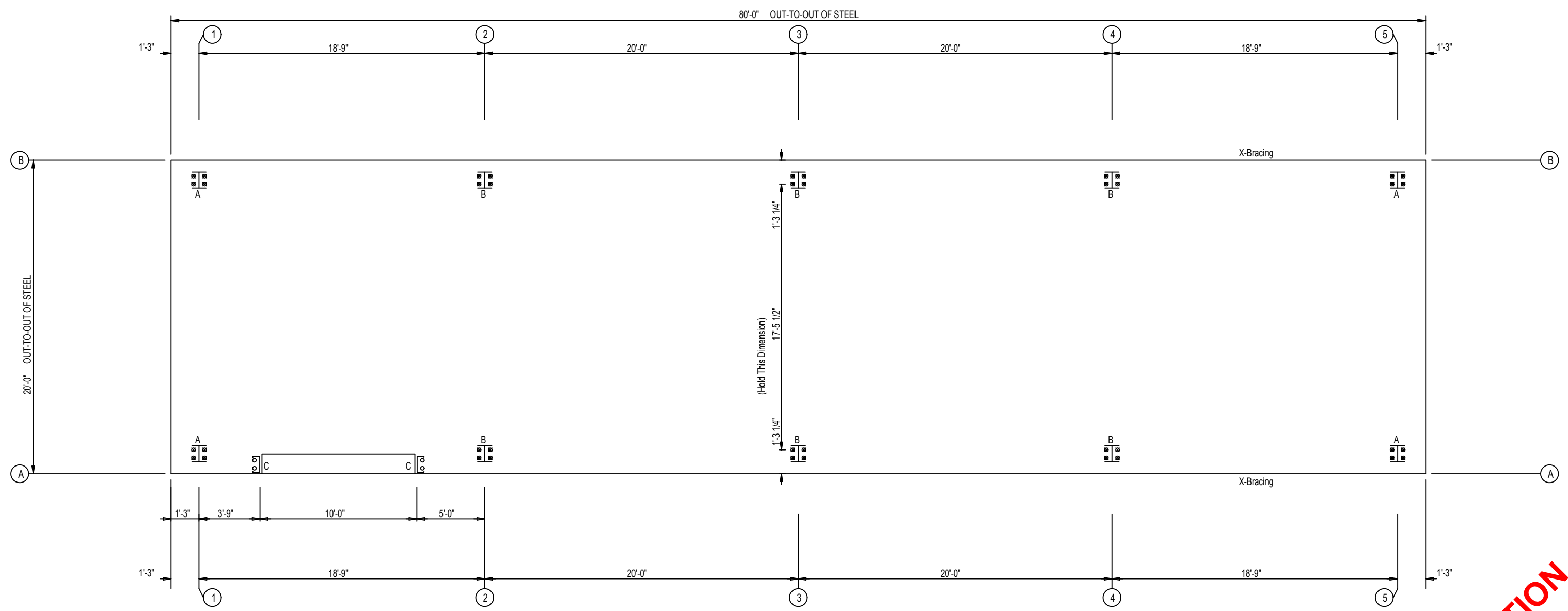


NOT FOR CONSTRUCTION

○ Dia= 5/8"

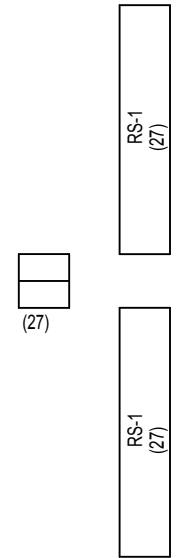
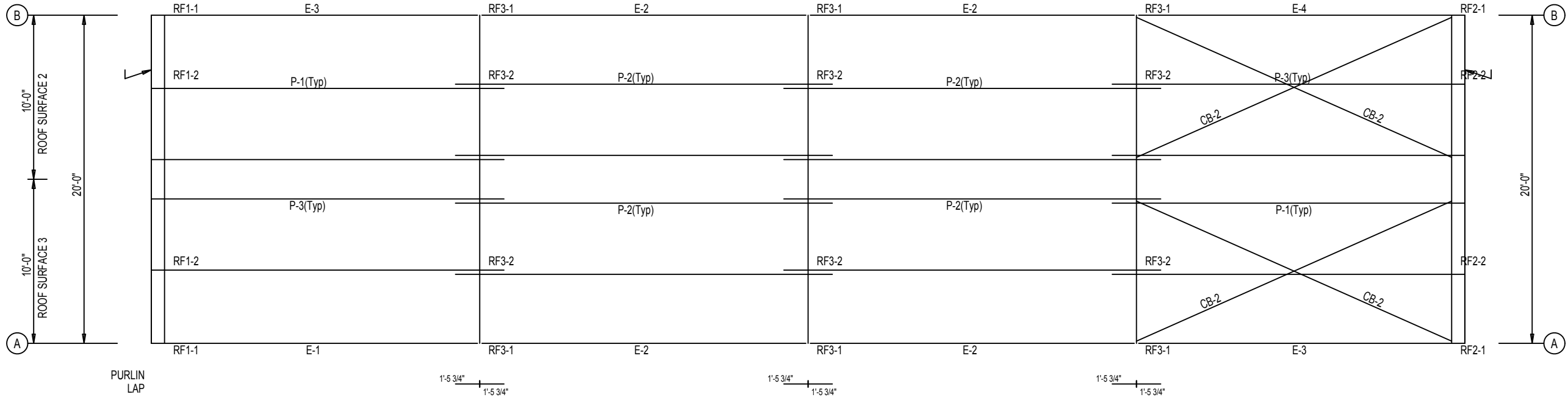
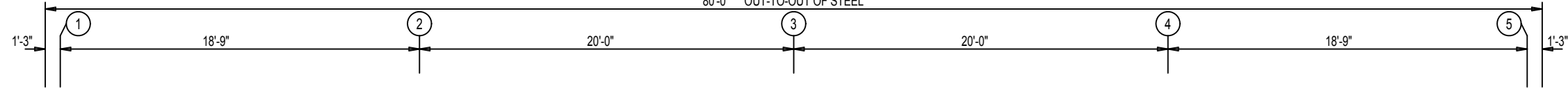
⊗ Dia= 3/4"



ANCHOR BOLT PLAN

NOT FOR CONSTRUCTION

80'-0" OUT-TO-OUT OF STEEL



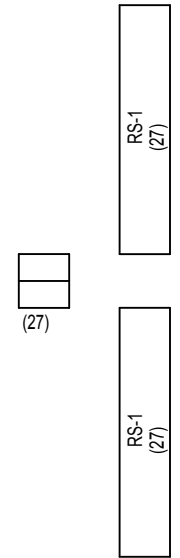
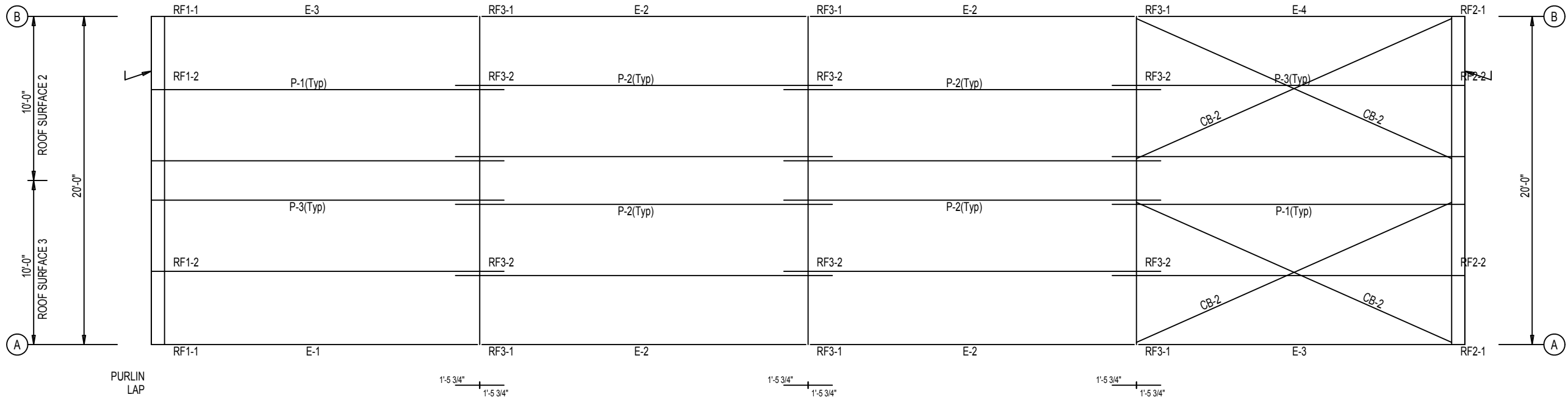
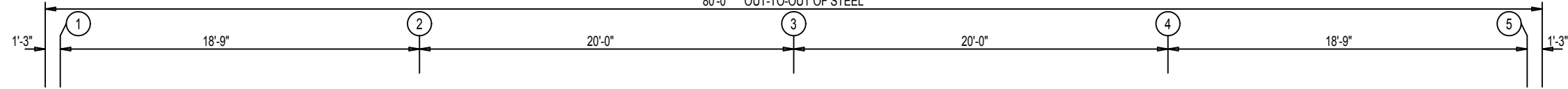
ROOF SHEETING

PANELS: 26 Gauge PBR Galvalume

ROOF FRAMING PLAN

NOT FOR CONSTRUCTION

80'-0" OUT-TO-OUT OF STEEL



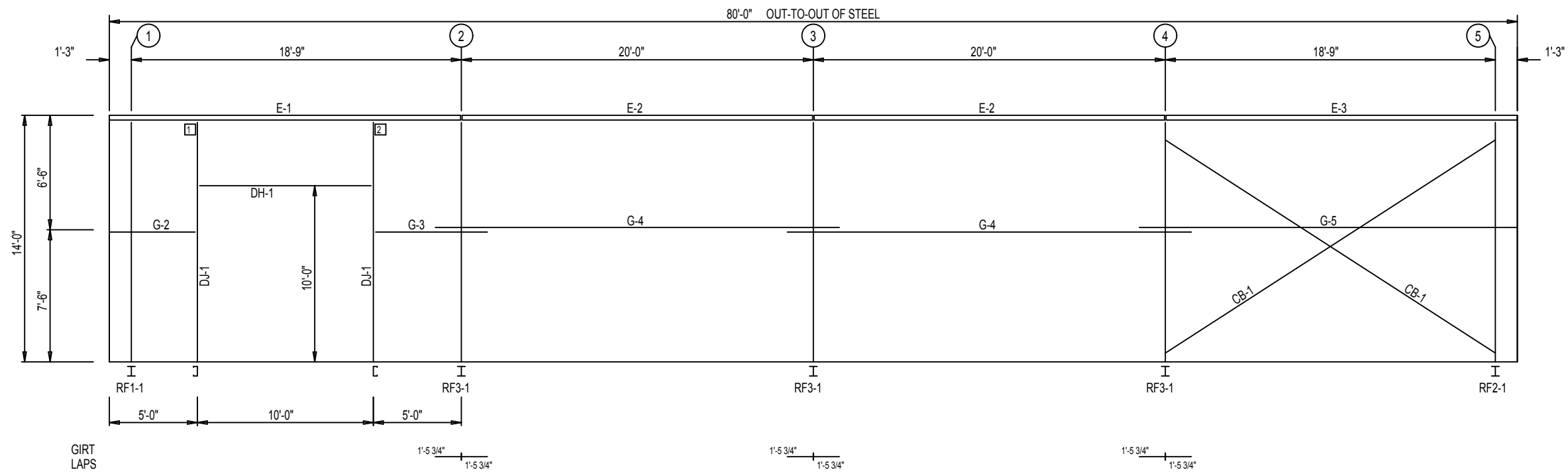
ROOF SHEETING

PANELS: 26 Gauge PBR Galvalume

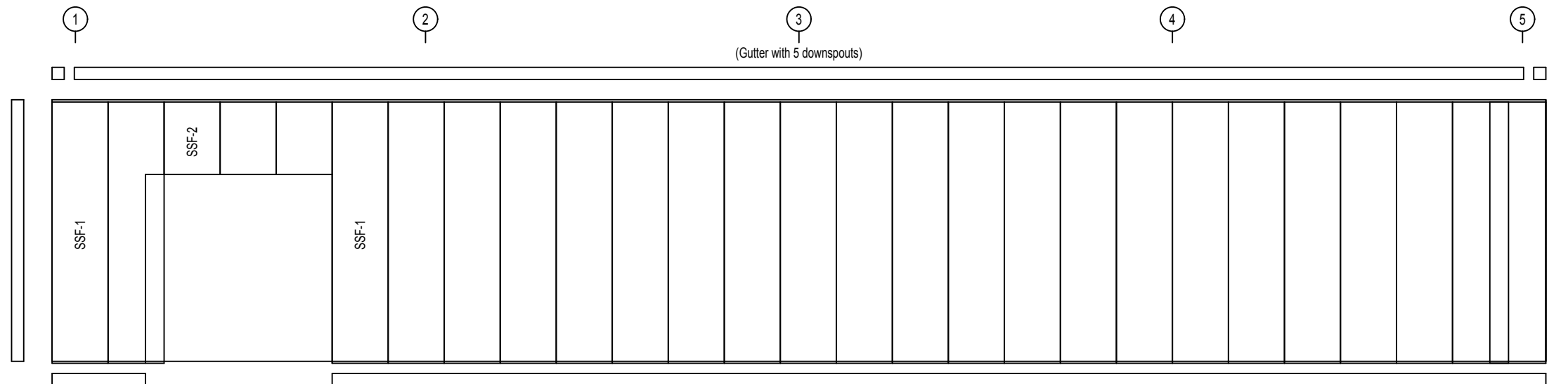
ROOF FRAMING PLAN

NOT FOR CONSTRUCTION

CONNECTION PLATES	
FRAME LINE A	
ID	MARK/PART
1	SC584_L
2	SC584_R



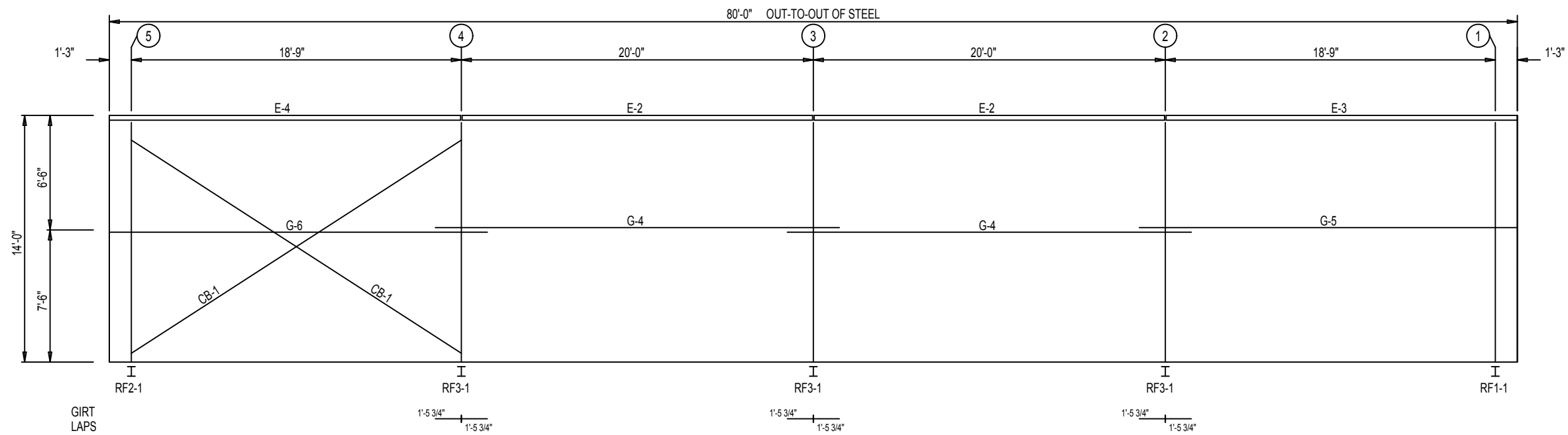
SIDEWALL FRAMING: FRAME LINE A



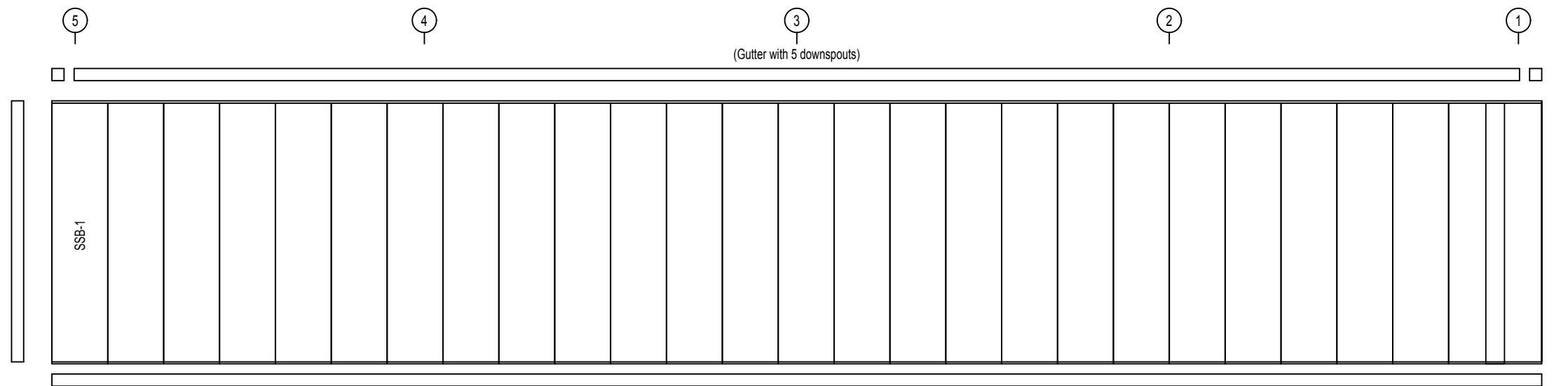
SIDEWALL SHEETING & TRIM: FRAME LINE A

PANELS: 26 Gauge PBR - Polar White

NOT FOR CONSTRUCTION



SIDEWALL FRAMING: FRAME LINE B

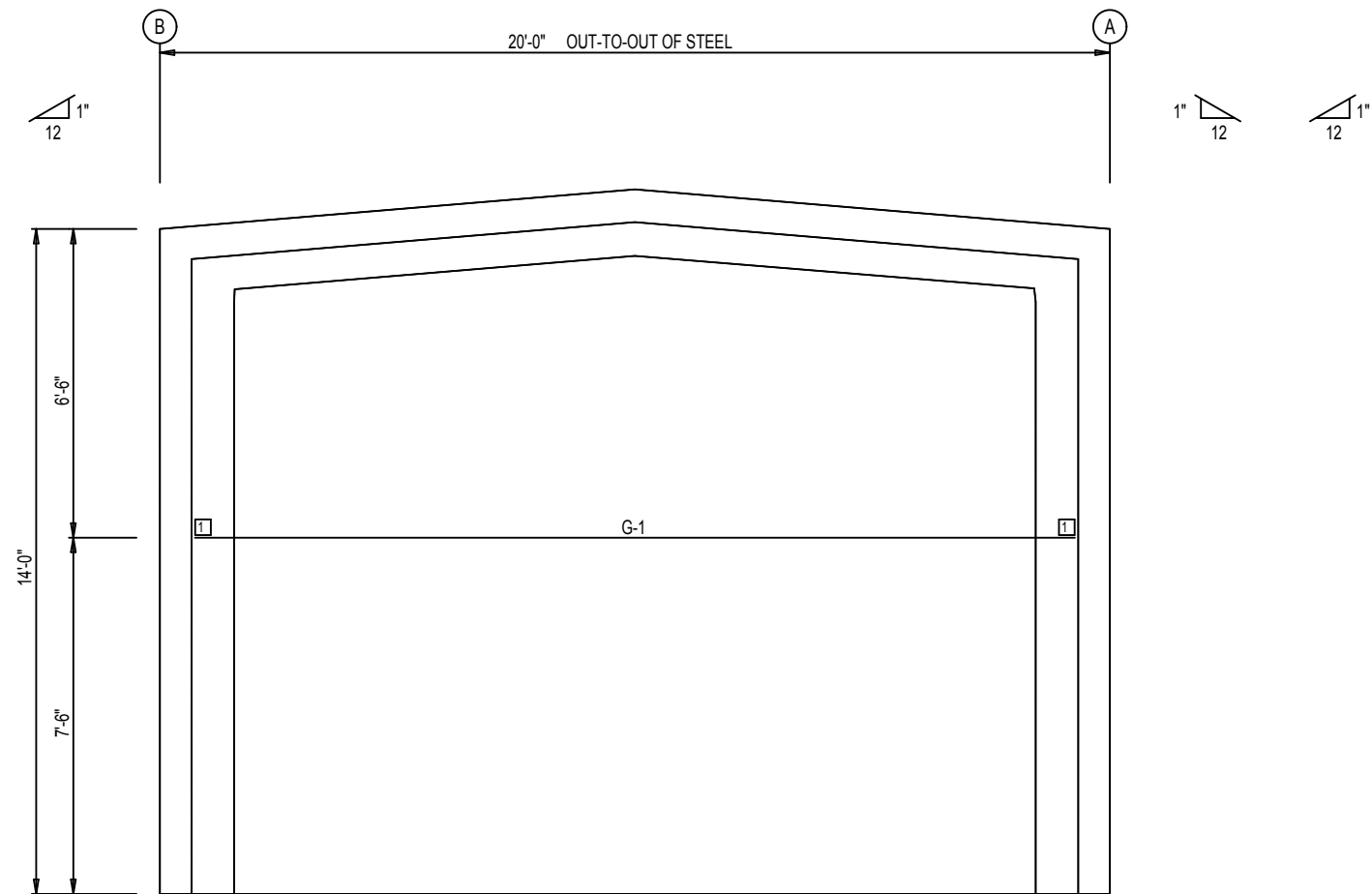


SIDEWALL SHEETING & TRIM: FRAME LINE B

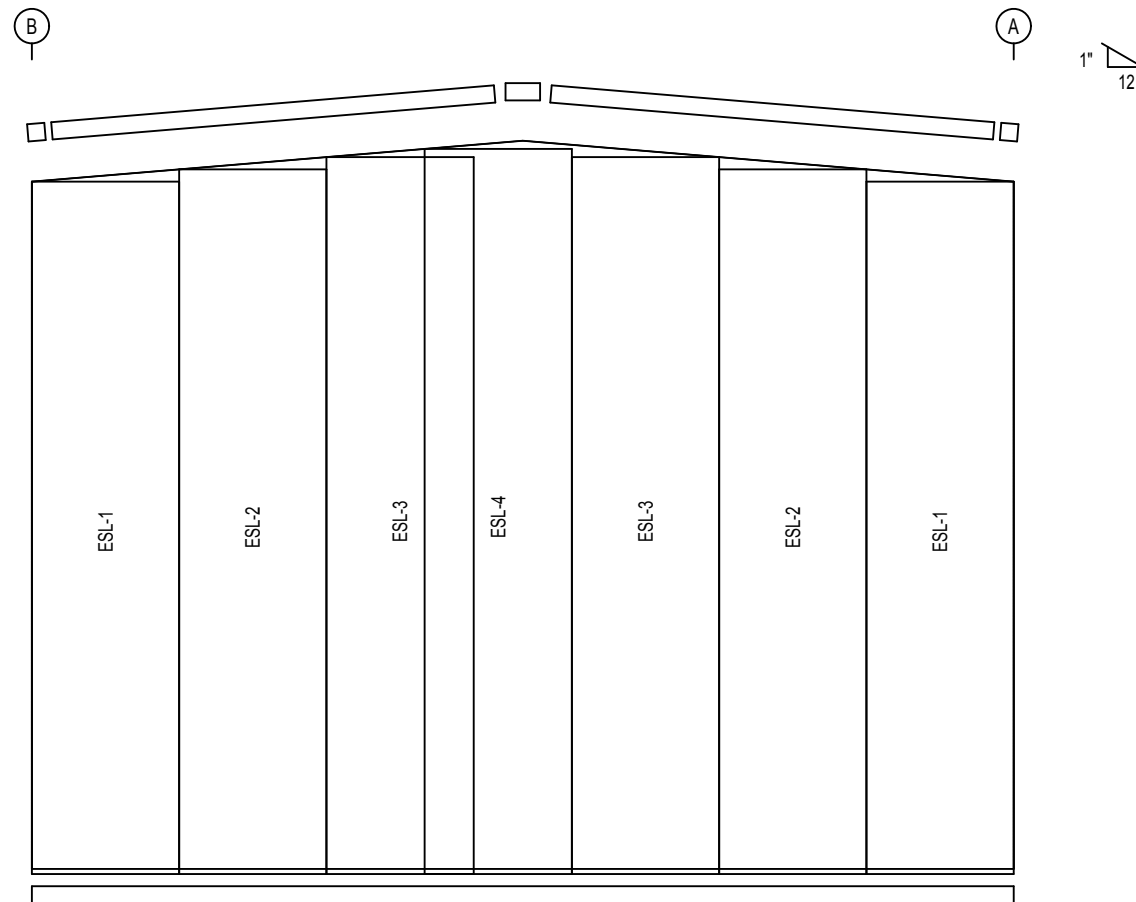
PANELS: 26 Gauge PBR - Polar White

NOT FOR CONSTRUCTION

CONNECTION PLATES	
FRAME LINE 1	
ID	MARK/PART
1	SC-484



ENDWALL FRAMING: FRAME LINE 1

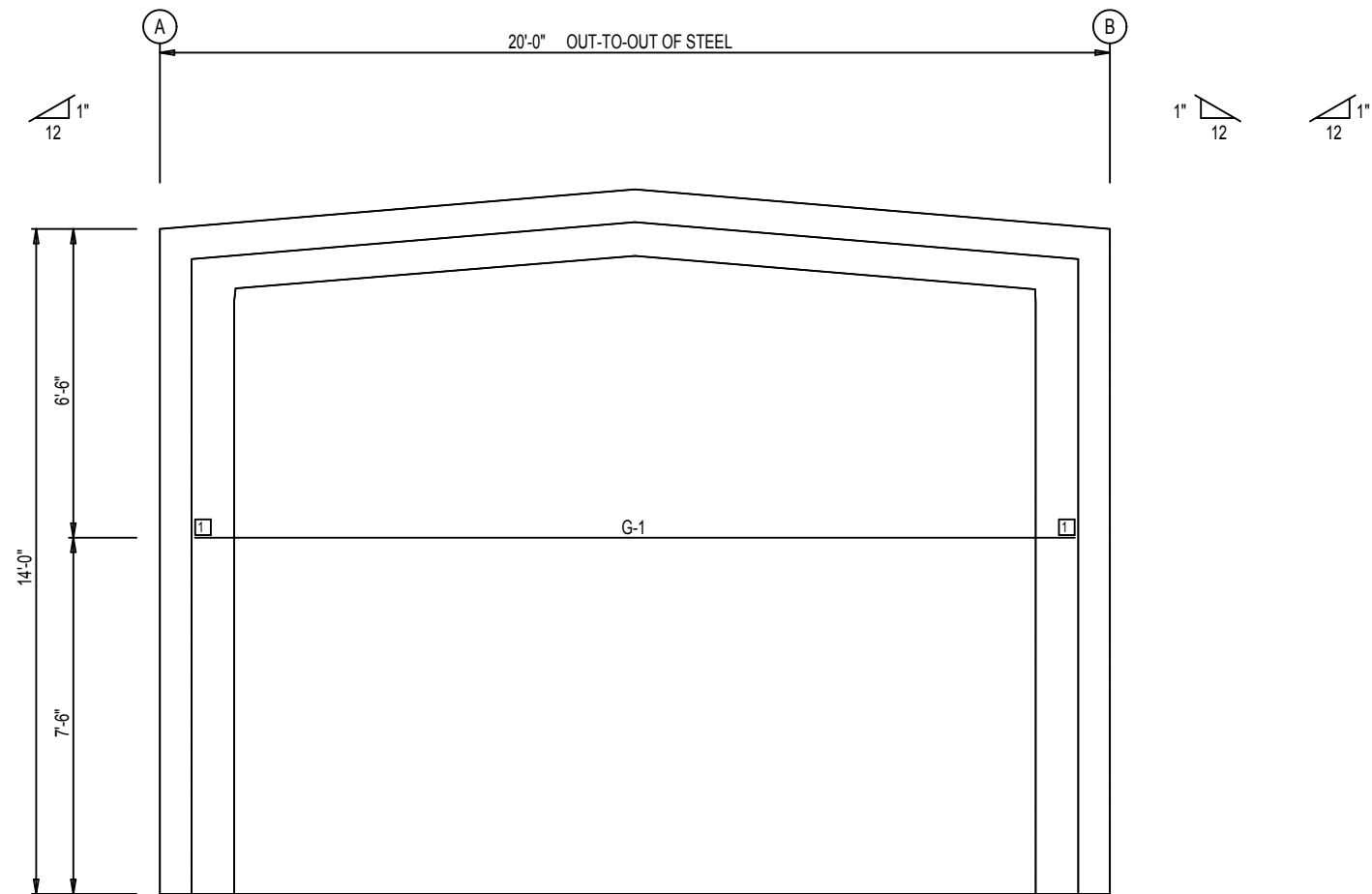


ENDWALL SHEETING & TRIM: FRAME LINE 1

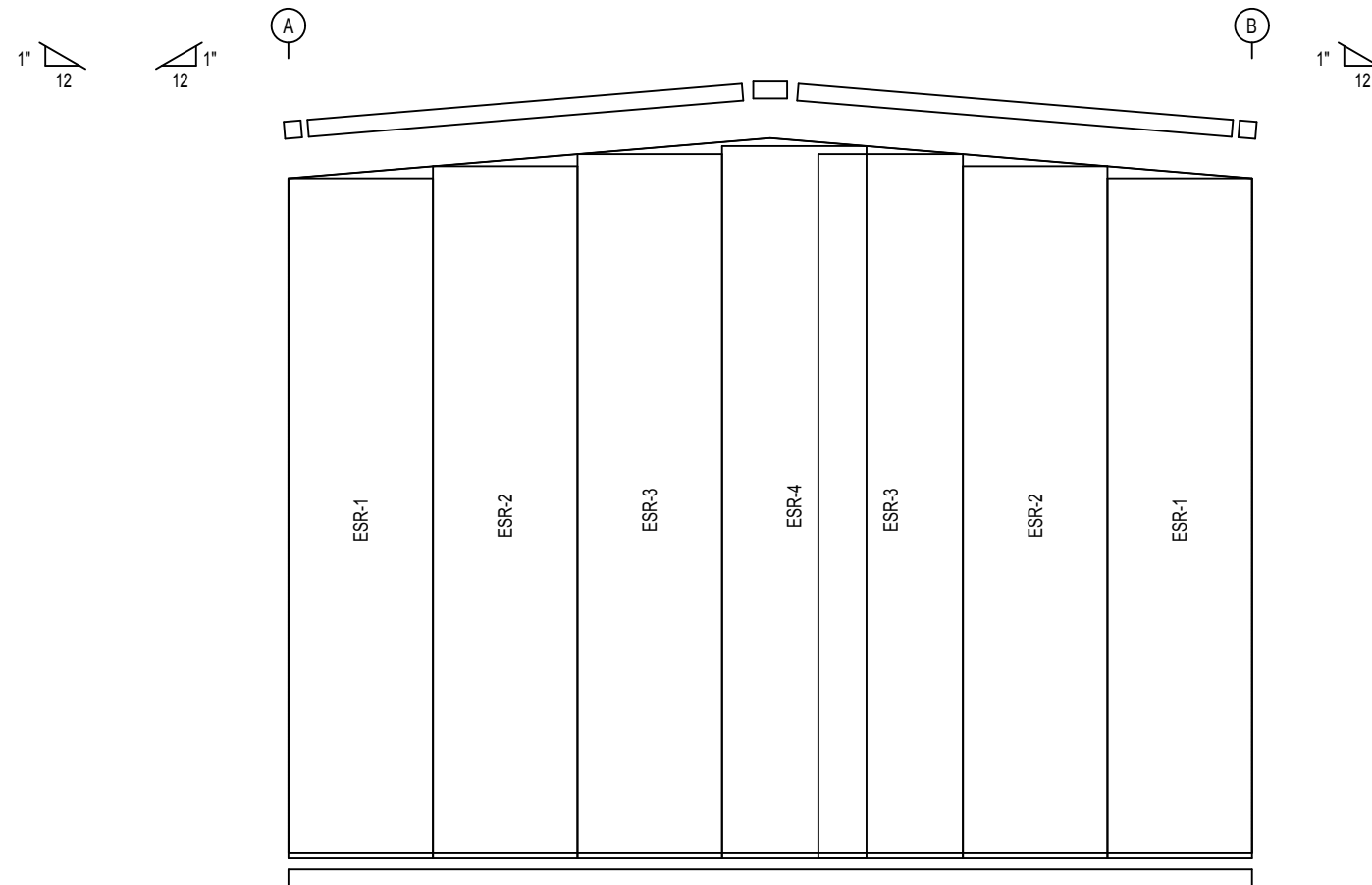
PANELS: 26 Gauge PBR - Polar White

NOT FOR CONSTRUCTION

CONNECTION PLATES	
FRAME LINE 5	
□ ID	MARK/PART
1	SC-484



ENDWALL FRAMING: FRAME LINE 5



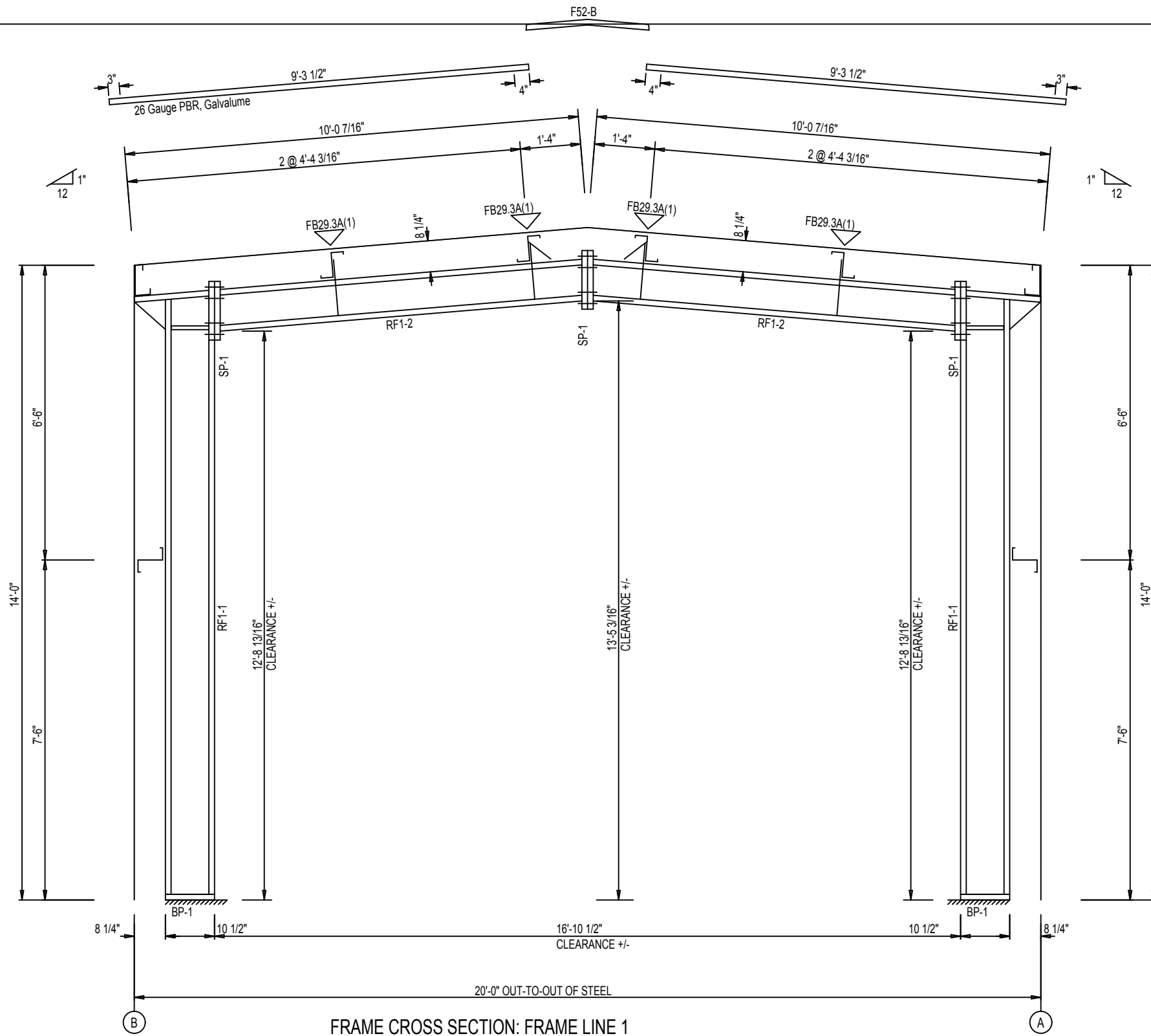
ENDWALL SHEETING & TRIM: FRAME LINE 5

PANELS: 26 Gauge PBR - Polar White

NOT FOR CONSTRUCTION

STIFFENER TABLE				
Mark	Stiff Mark	Width	Plate Size Thick	Length
RF1-1	St- 1	2 1/2	1/4"	10"

▽ FLANGE BRACES: BOTH SIDES(UNLESS NOTED)
 FBxxA(1): xx=length(in)
 A - L2X2X14G

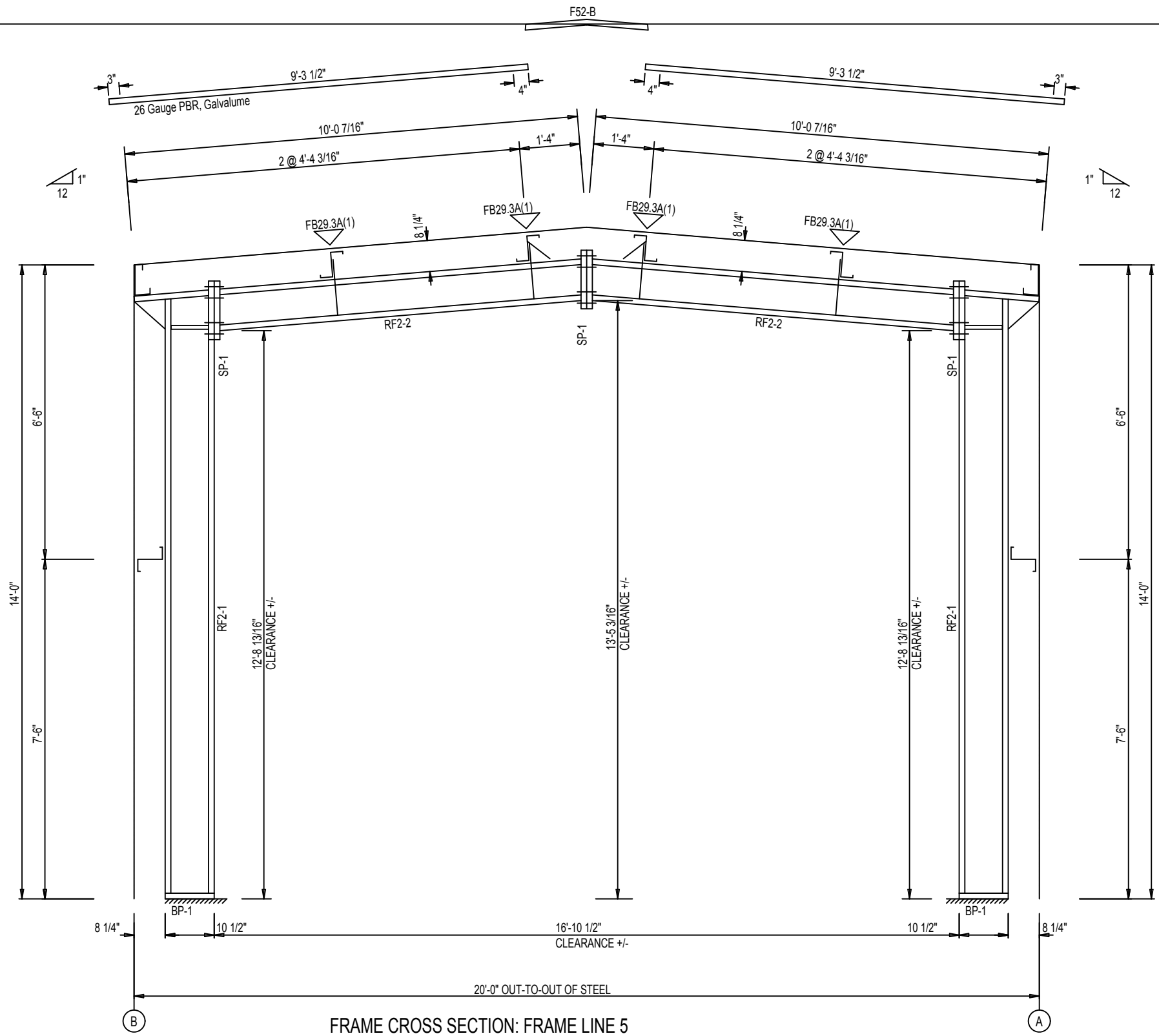


FRAME CROSS SECTION: FRAME LINE 1

NOT FOR CONSTRUCTION

STIFFENER TABLE				
Mark	Stiff Mark	Width	Plate Size Thick	Length
RF2-1	St- 1	2 1/2	1/4"	10"

▽ FLANGE BRACES: BOTH SIDES (UNLESS NOTED)
 FBxxA(1): xx=length(in)
 A - L2X2X14G

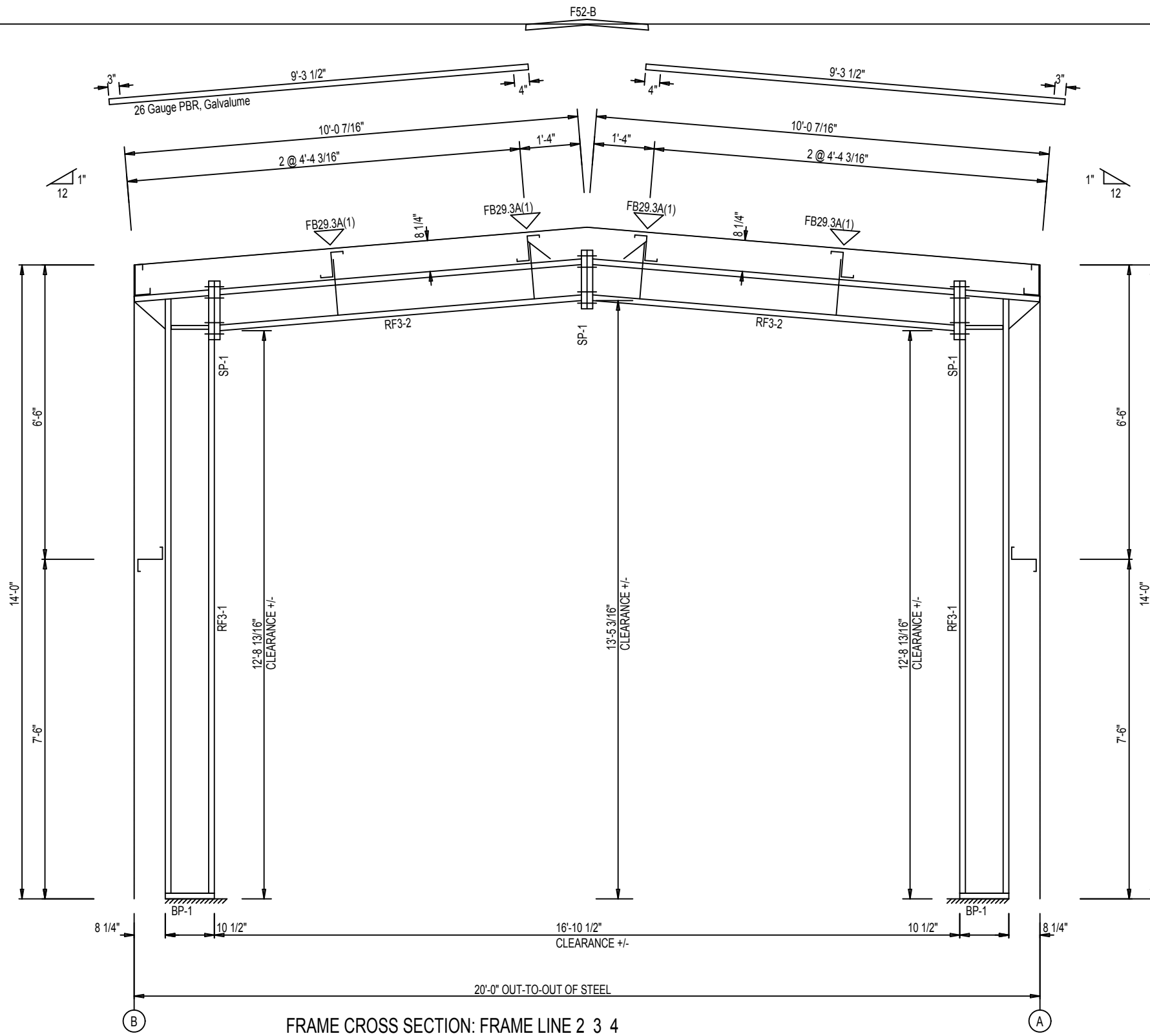


FRAME CROSS SECTION: FRAME LINE 5

NOT FOR CONSTRUCTION

STIFFENER TABLE				
Mark	Stiff Mark	Width	Plate Size Thick	Length
RF3-1	St- 1	2 1/2	1/4"	10"

▽ FLANGE BRACES: BOTH SIDES (UNLESS NOTED)
 FBxxA(1): xx=length(in)
 A - L2X2X14G



NOT FOR CONSTRUCTION