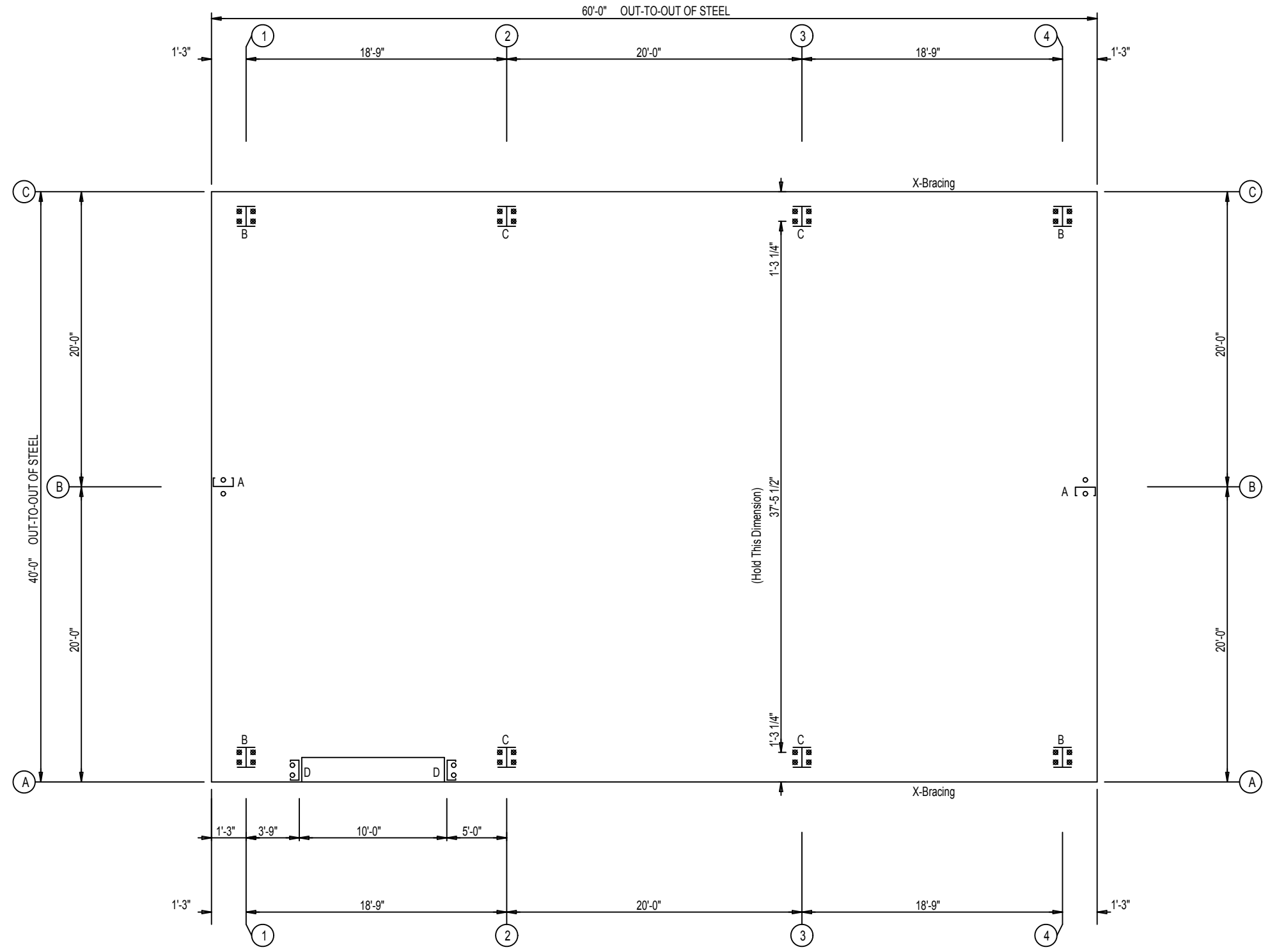


NOT FOR CONSTRUCTION

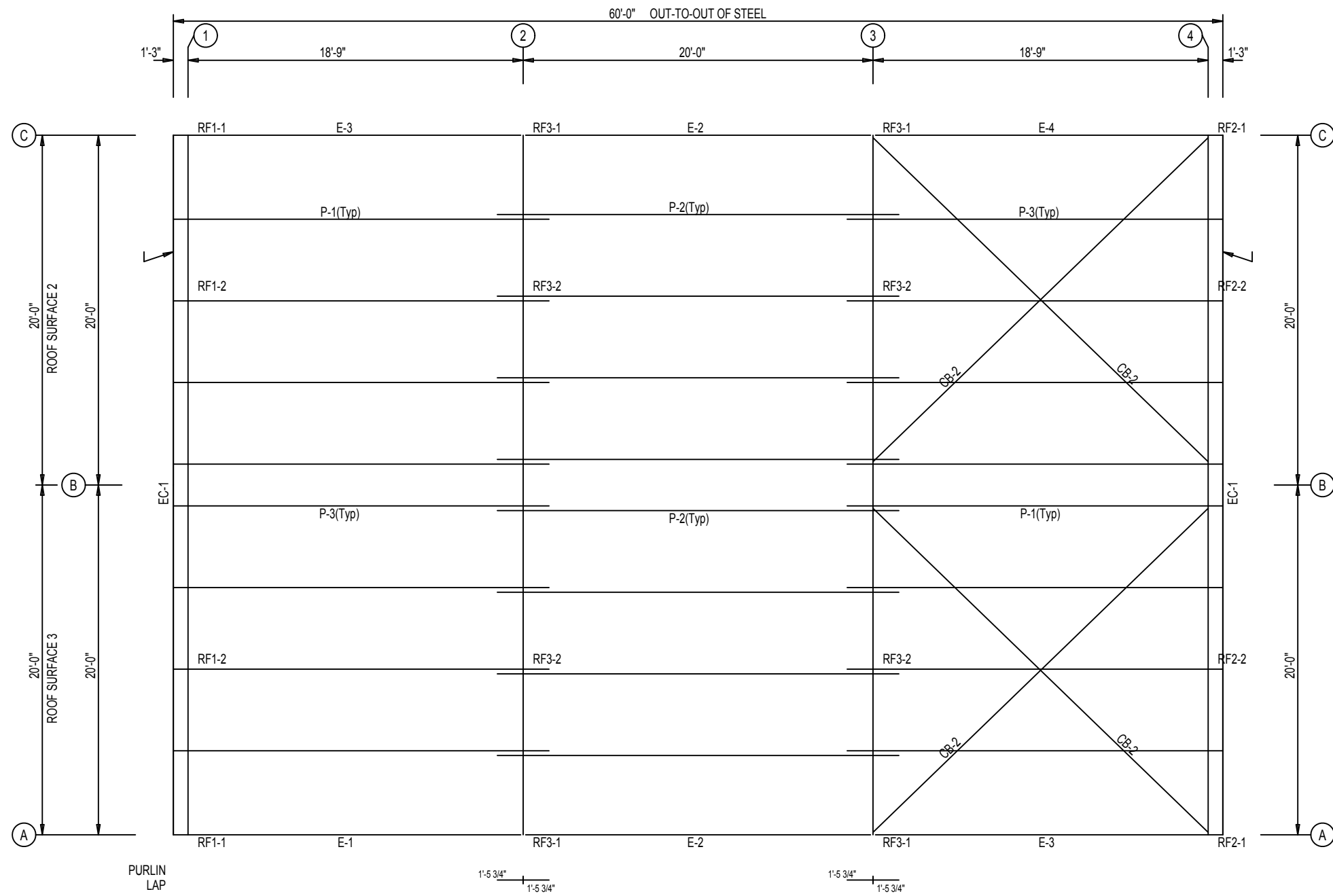
○ Dia= 5/8"

⊗ Dia= 3/4"

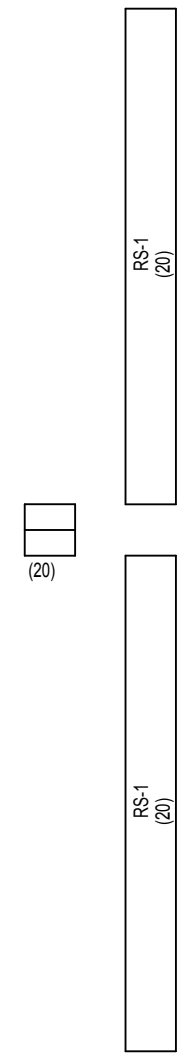


ANCHOR BOLT PLAN

NOT FOR CONSTRUCTION

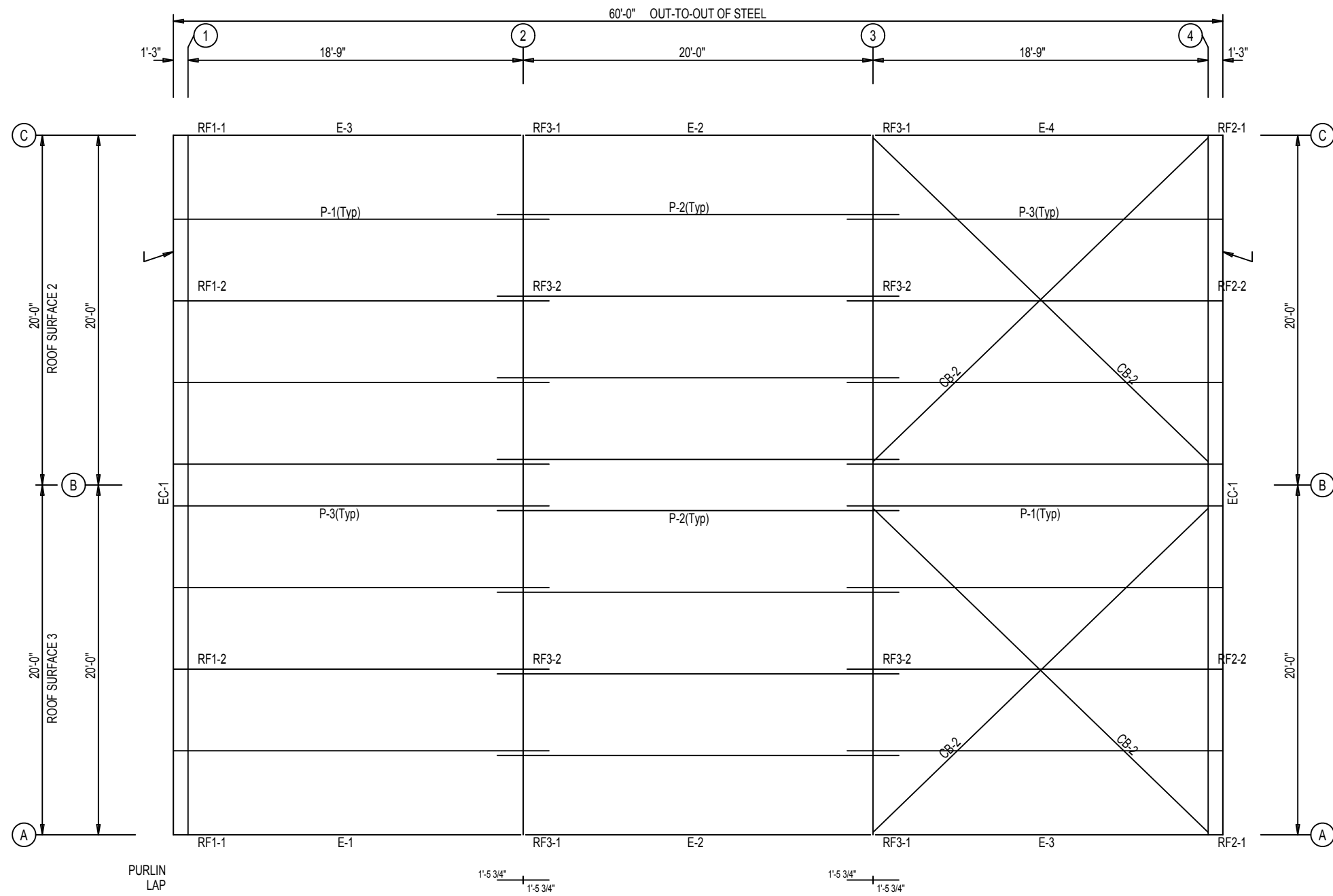


ROOF FRAMING PLAN

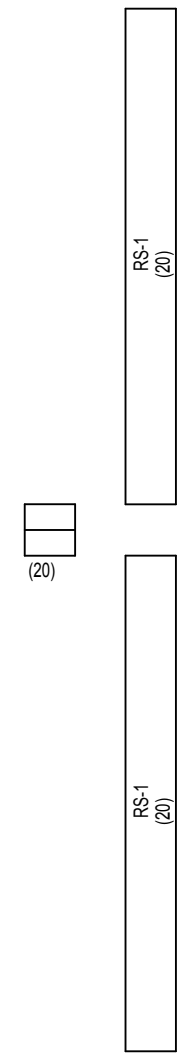


ROOF SHEETING
 PANELS: 26 Gauge PBR Galvalume

NOT FOR CONSTRUCTION



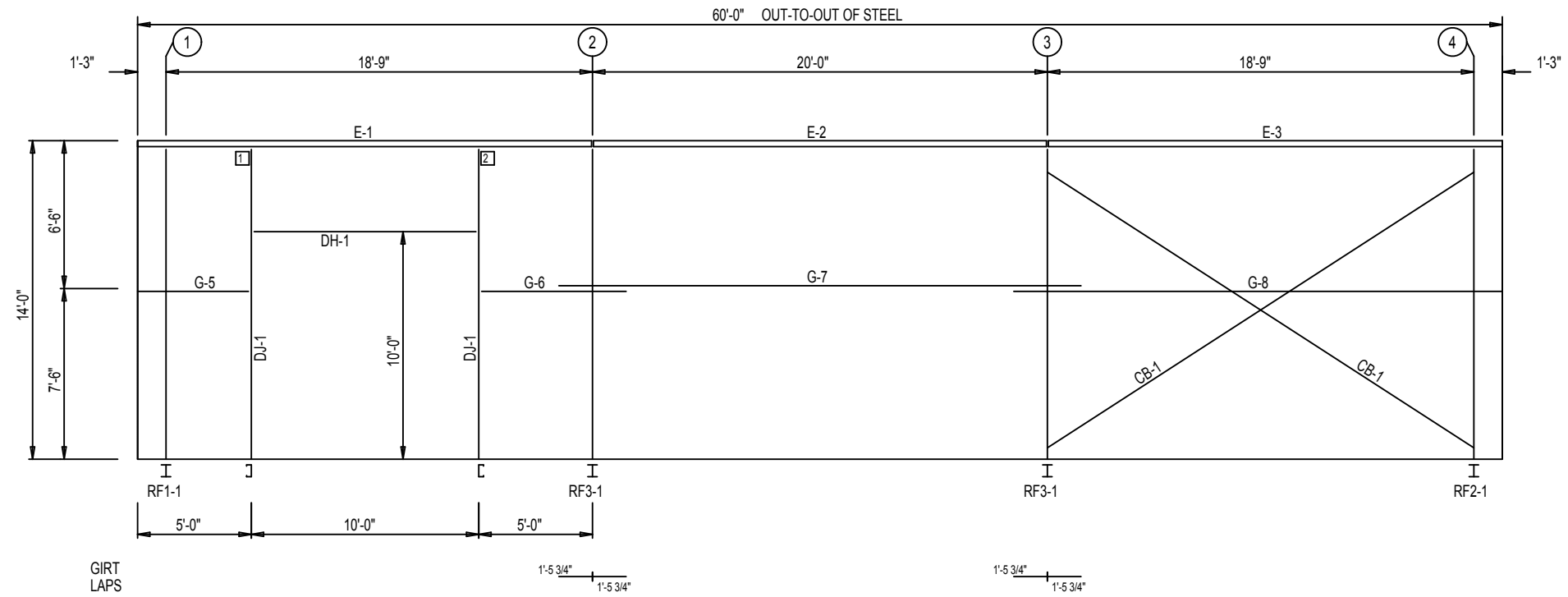
ROOF FRAMING PLAN



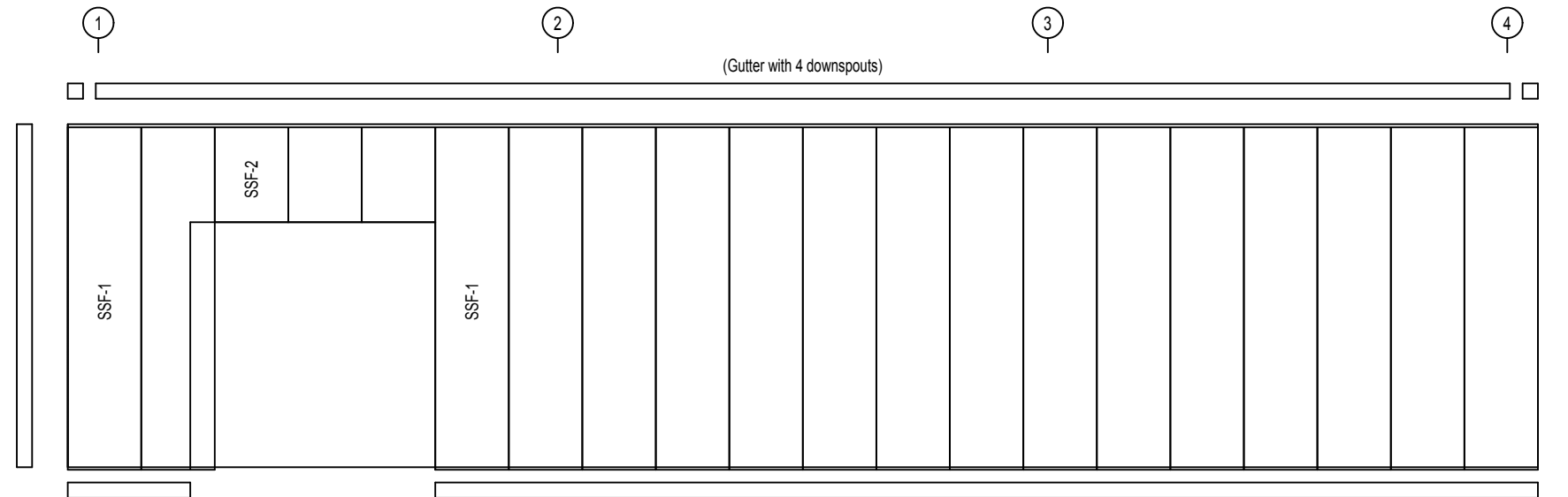
ROOF SHEETING
 PANELS: 26 Gauge PBR Galvalume

NOT FOR CONSTRUCTION

CONNECTION PLATES	
FRAME LINE A	
ID	MARK/PART
1	SC584 L
2	SC584 R



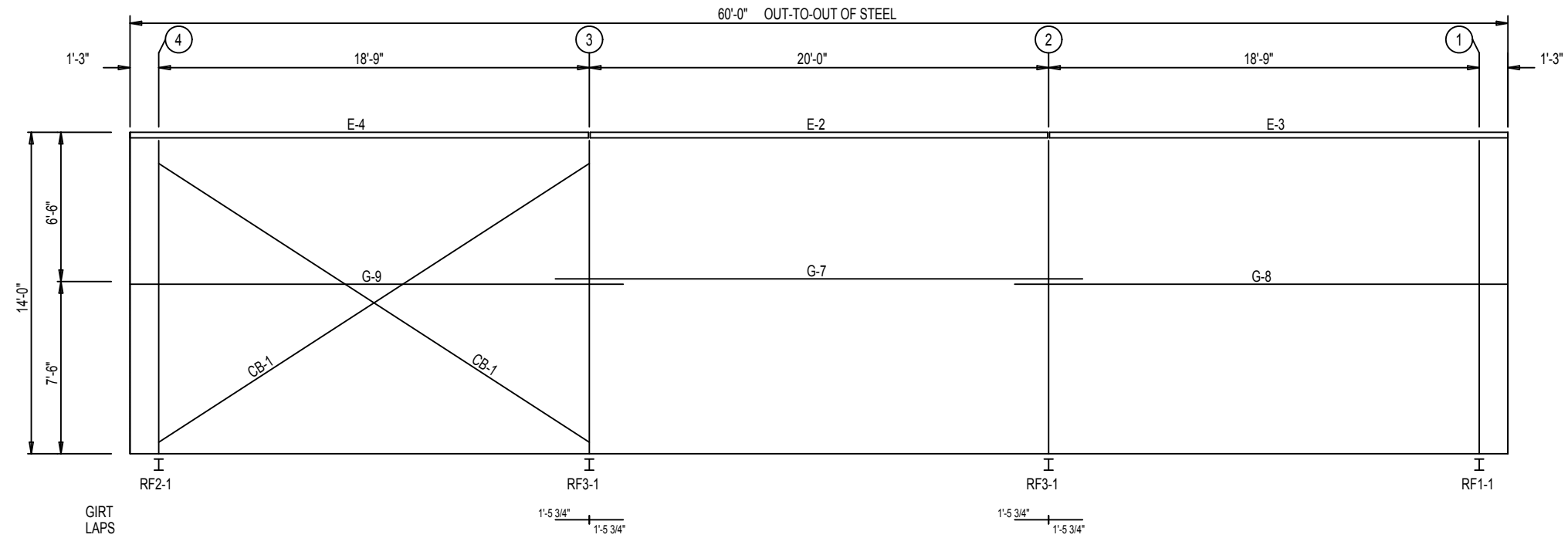
SIDEWALL FRAMING: FRAME LINE A



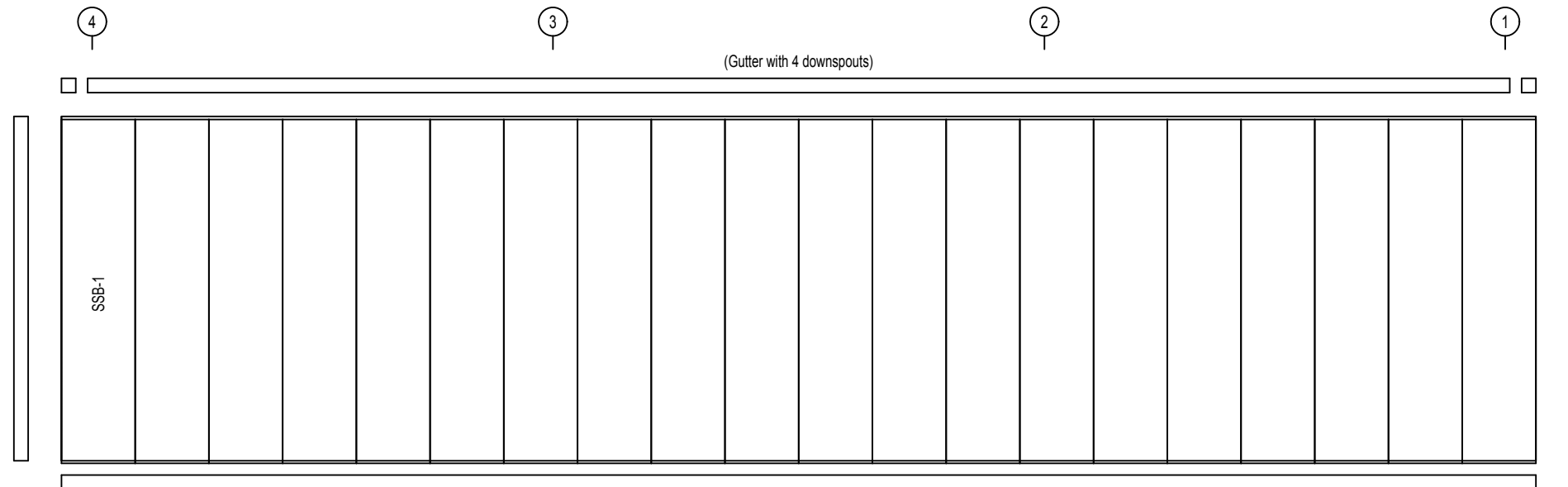
SIDEWALL SHEETING & TRIM: FRAME LINE A

PANELS: 26 Gauge PBR - Polar White

NOT FOR CONSTRUCTION



SIDEWALL FRAMING: FRAME LINE C



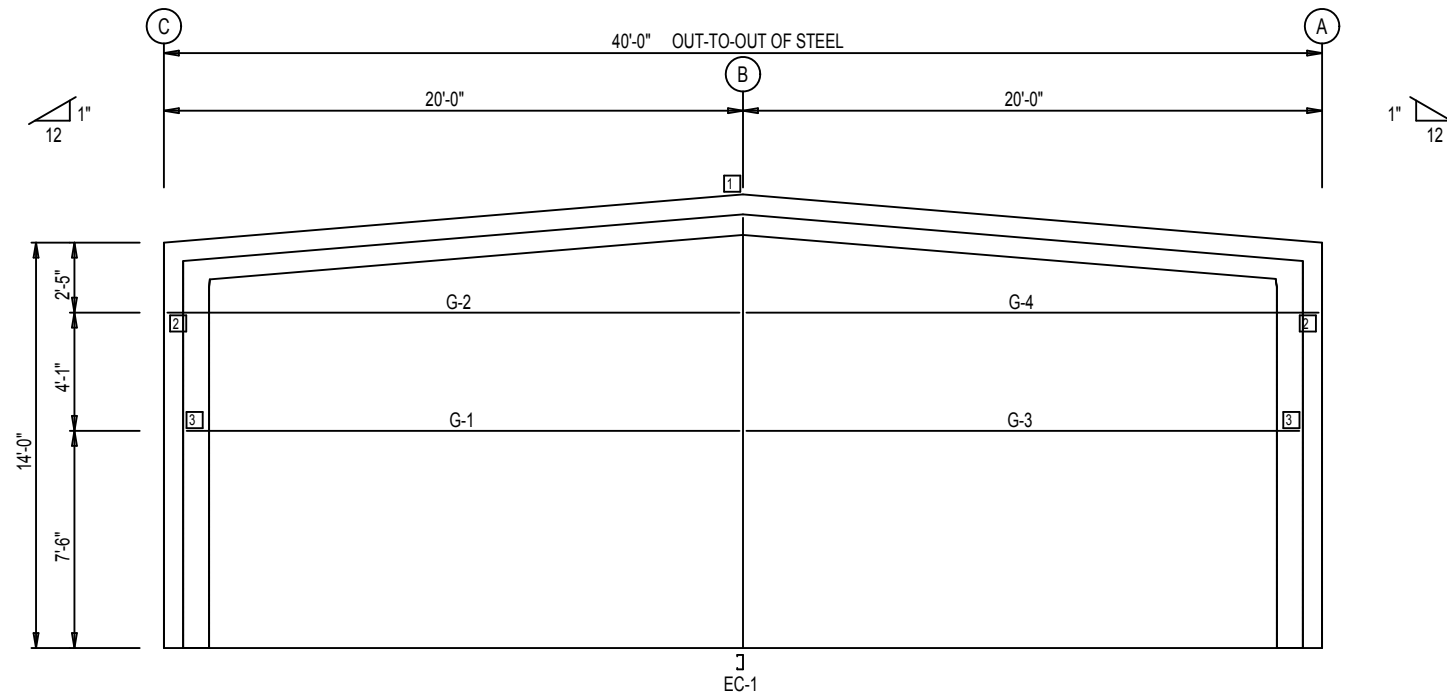
SIDEWALL SHEETING & TRIM: FRAME LINE C

PANELS: 26 Gauge PBR - Polar White

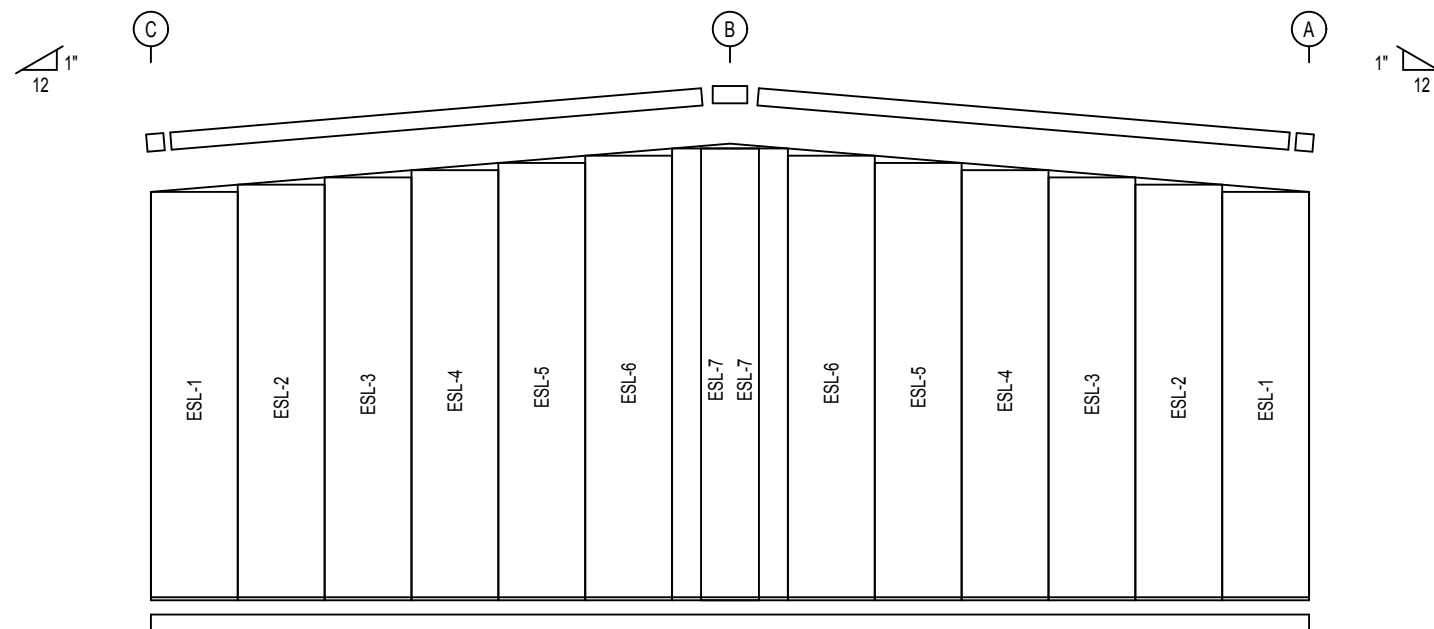
NOT FOR CONSTRUCTION

BOLT TABLE				
FRAME LINE 1				
LOCATION	QUAN	TYPE	DIA	LENGTH
Columns/Raf	4	A325	1/2"	1 1/4"

CONNECTION PLATES	
FRAME LINE 1	
ID	MARK/PART
1	n1
2	d1
3	SC-484



ENDWALL FRAMING: FRAME LINE 1



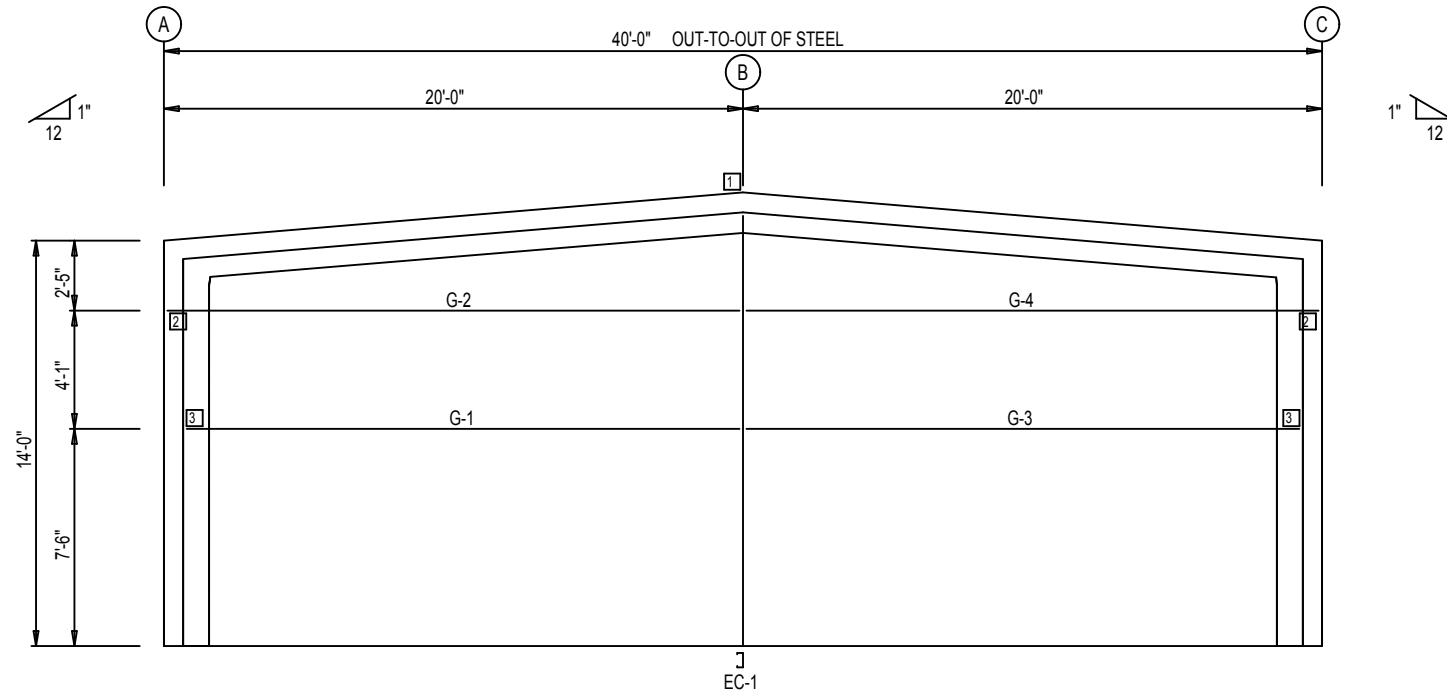
ENDWALL SHEETING & TRIM: FRAME LINE 1

PANELS: 26 Gauge PBR - Polar White

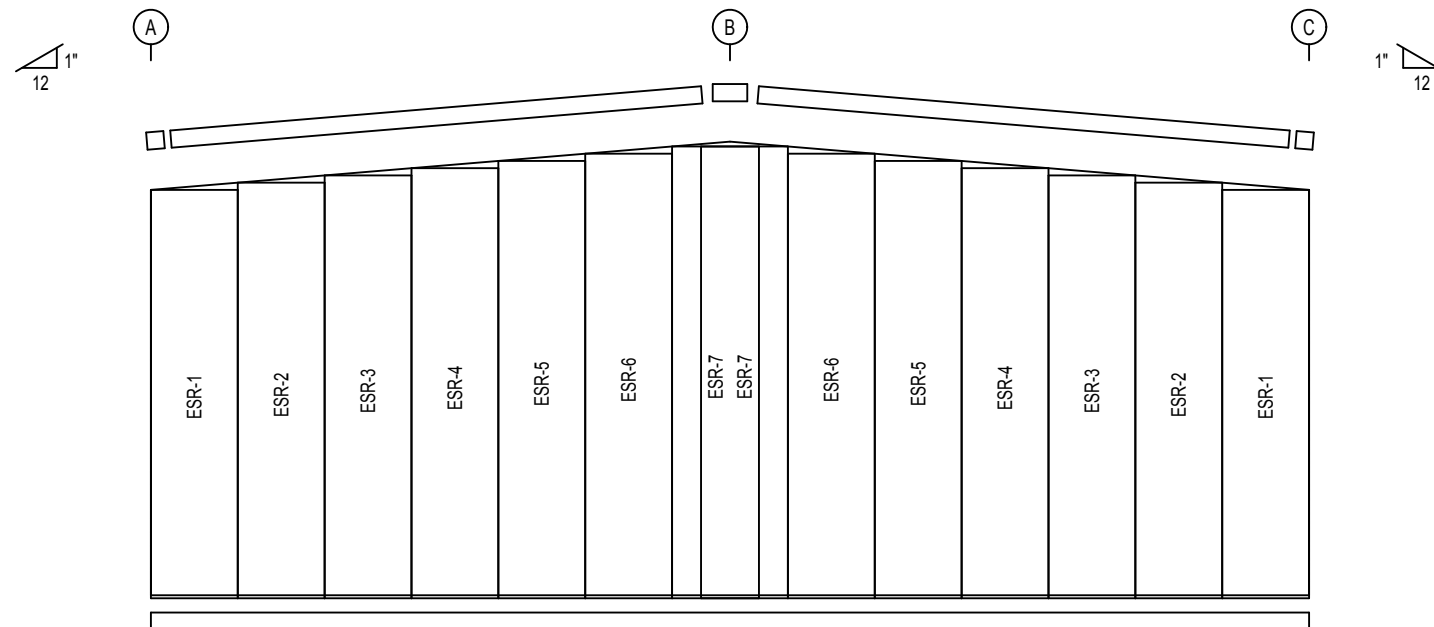
NOT FOR CONSTRUCTION

BOLT TABLE				
FRAME LINE 4				
LOCATION	QUAN	TYPE	DIA	LENGTH
Columns/Raf	4	A325	1/2"	1 1/4"

CONNECTION PLATES	
FRAME LINE 4	
ID	MARK/PART
1	n1
2	d1
3	SC-484



ENDWALL FRAMING: FRAME LINE 4



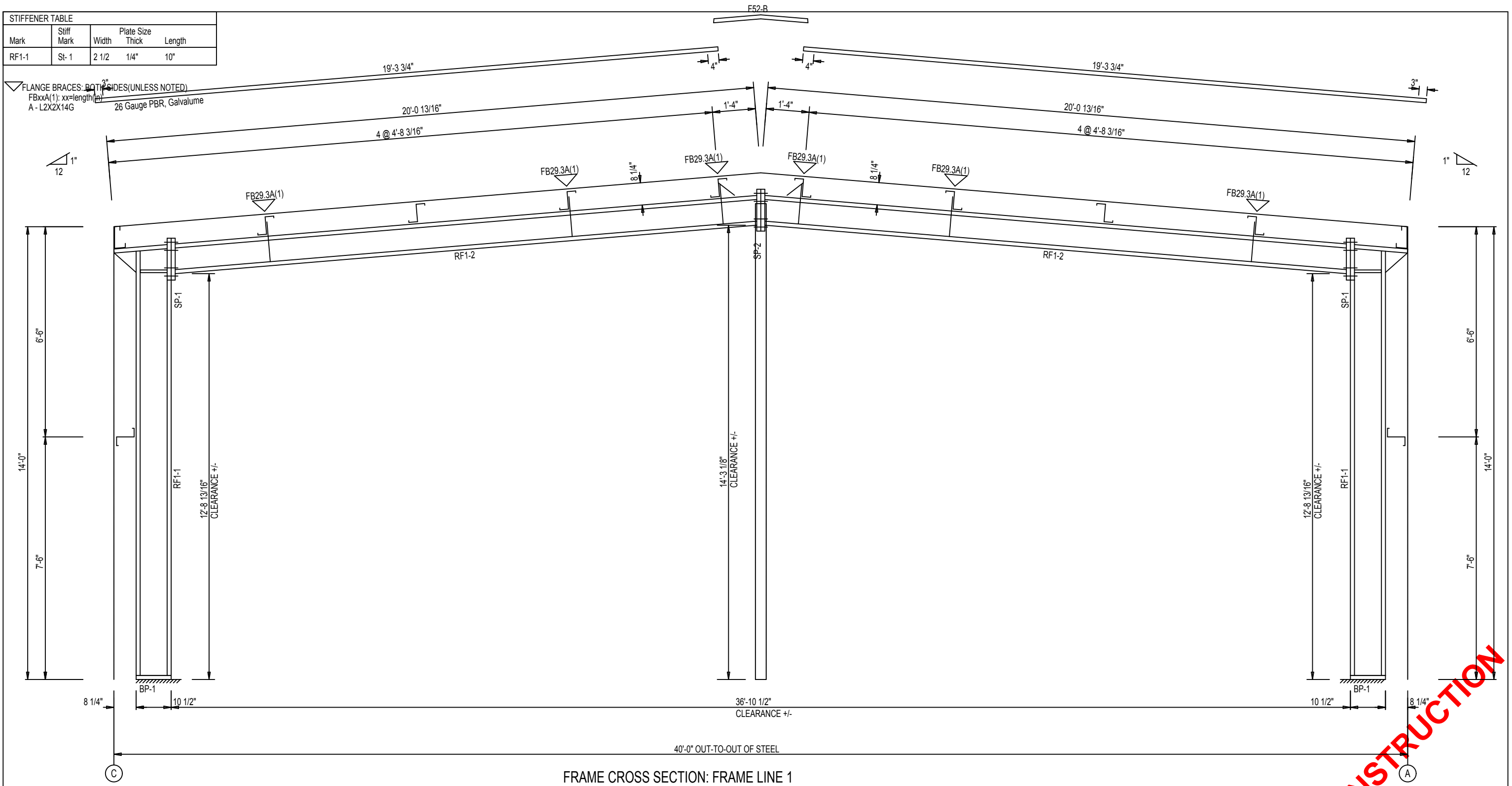
ENDWALL SHEETING & TRIM: FRAME LINE 4

PANELS: 26 Gauge PBR - Polar White

NOT FOR CONSTRUCTION

STIFFENER TABLE				
Mark	Stiff Mark	Width	Plate Size Thick	Length
RF1-1	St-1	2 1/2	1/4"	10"

FLANGE BRACES: BOTH SIDES (UNLESS NOTED)
 FBxxA(1); xx=length
 A - L2X2X14G 26 Gauge PBR, Galvalume

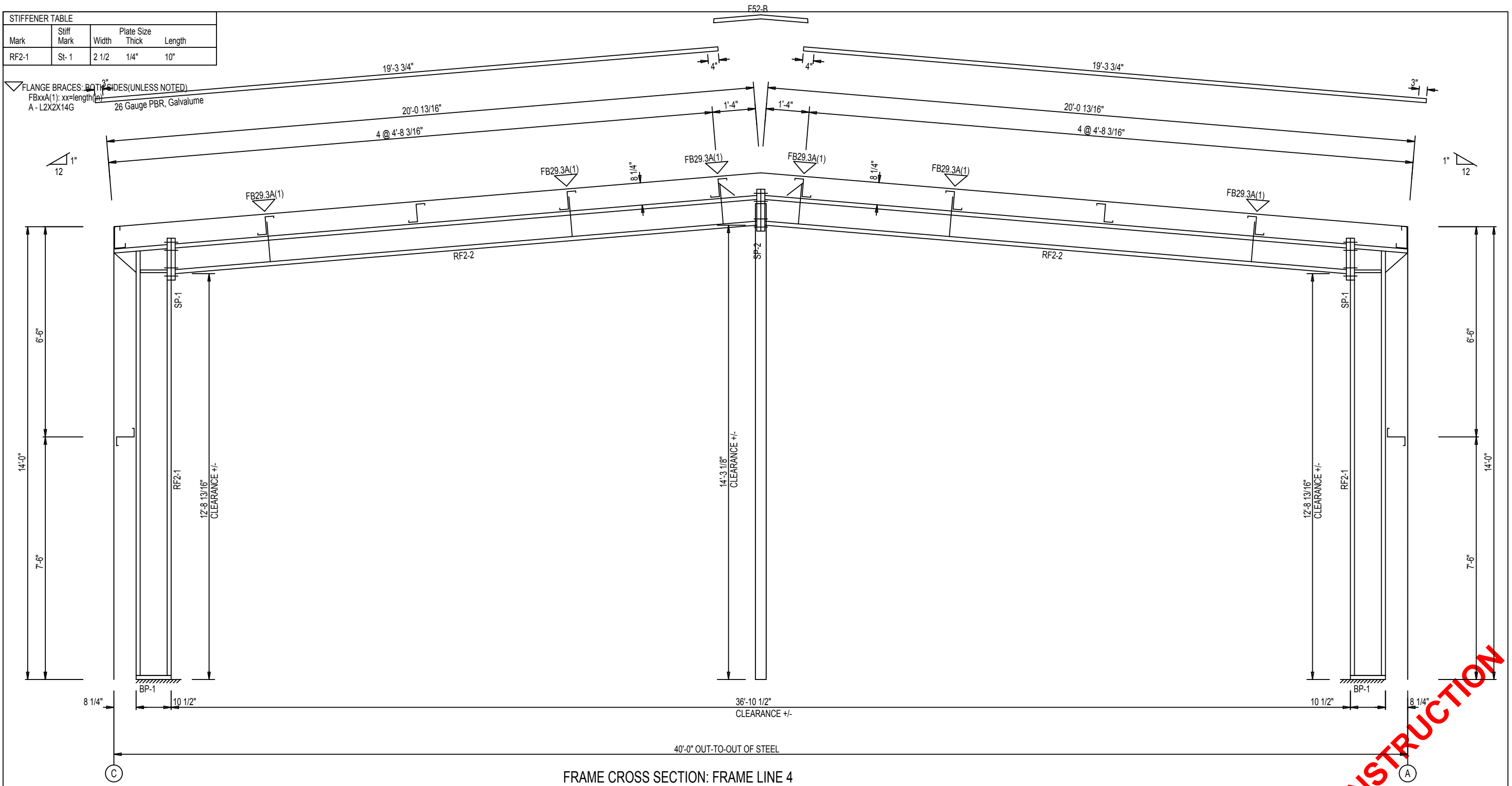


FRAME CROSS SECTION: FRAME LINE 1

NOT FOR CONSTRUCTION

STIFFENER TABLE				
Mark	Stiff Mark	Width	Plate Size Thick	Length
RF2-1	St-1	2 1/2	1/4"	10"

FLANGE BRACES: BOTH SIDES (UNLESS NOTED)
 FBxxA(1); xx=length
 A - L2X2X14G 26 Gauge PBR, Galvalume

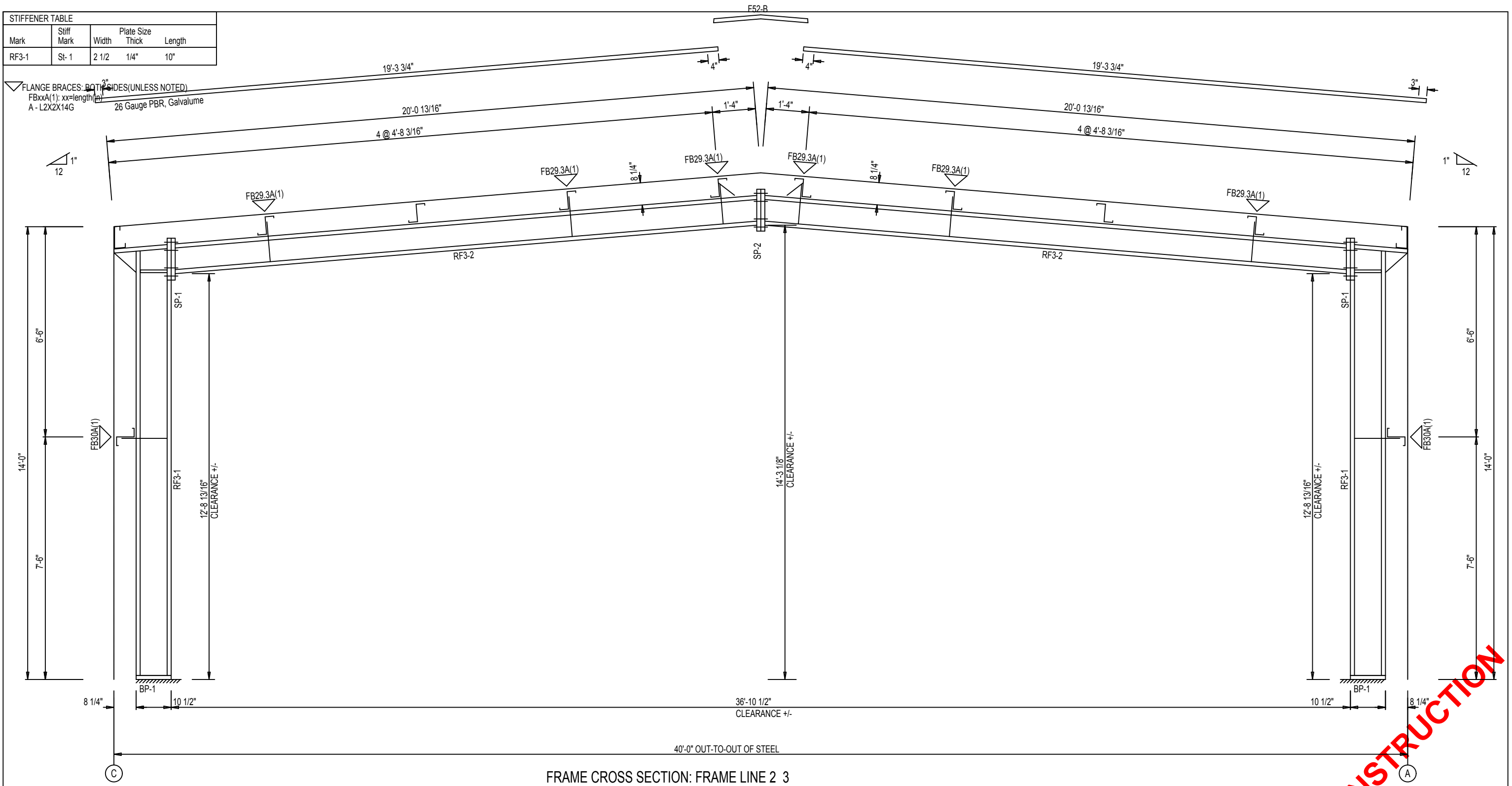


FRAME CROSS SECTION: FRAME LINE 4

NOT FOR CONSTRUCTION

STIFFENER TABLE				
Mark	Stiff Mark	Width	Plate Size Thick	Length
RF3-1	St-1	2 1/2	1/4"	10"

FLANGE BRACES: BOTH SIDES (UNLESS NOTED)
 FBxxA(1); xx=length
 A - L2X2X14G 26 Gauge PBR, Galvalume



NOT FOR CONSTRUCTION